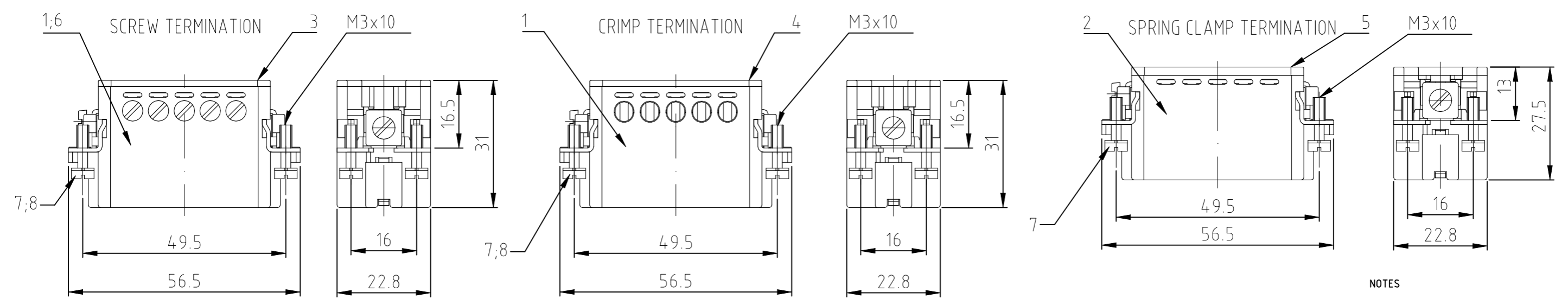
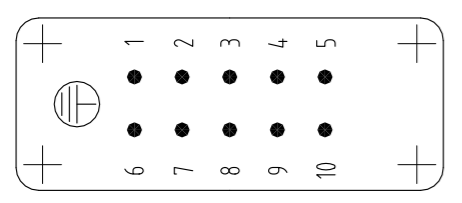


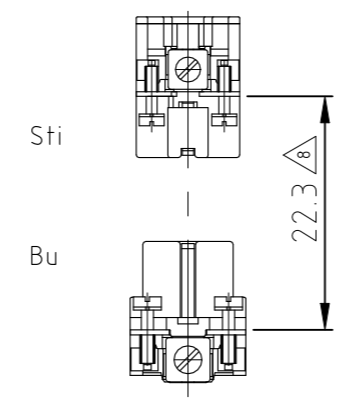
P	LTR	DESCRIPTION BESCHREIBUNG	DATE	DWN	APVD
D6	ECR-23-191174		16JAN2024	RK	WR



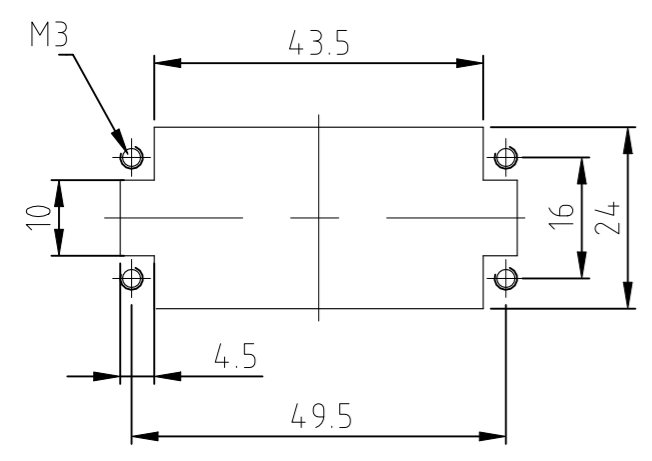
Contact arrangement / view from termination side



Assembling instruction
 distance for safety contact marking max. 24 mm



Panel cut-out for contact insert when used without housing



QTY	DESCRIPTION / BENENNUNG	MATERIAL	Oberfläche	COLOR / FARBE	ITEM NO. POS.	REMARKS / BEMERKUNGEN
4	fixing screw	stainl.steel	blank		8	M3x10
4	fixing screw	steel	nickel plated	blue	7	M3x10
1	pin insert screw		PBT	hellbeige	6	with AU-contacts
1	cover spring strain clip		PBT	hellbeige	5	
1	cover crimp		PBT	helbeige	4	
1	cover screw		PBT	hellbeige	3	
1	pin insert spring strain clip		PBT	helbeige	2	
1	pin insert screw		PBT	helbeige	1	

- NOTES
- SUITABLE CRIMP CONTACTS: SERIES HE/HA
OUTER DIMENSIONS OF INSULATION: MAX. Ø3,2 MM
 - SUITABLE HOOD SIZE 2: SERIES HA; HD
SUITABLE INSERTION AND EXTRACTION TOOL:
SCREWDRIVER 0,5x3 DIN 5264
 - Strip lenght: Screw conection 10mm
Spring clamp conection 10mm Crimp conection 7.5mm
 - STANDARDS:
DIN EN 61984; DIN EN 60664-1
 - PACKAGING
10 SETS IN A CARTON, PRE-MOUNTED
 - SPECIAL PACKAGING
200 PIECES IN A KANN-BAN BOT
 - SPECIAL PACKAGING
100 PIECES IN A KANN-BAN BOT

HA.10.Sti.S.WIE	HA.10.Sti.C-OBS	HA.10.Sti.S-KM	HA.10.Sti.S-OBS	HA.10.Sti.S-VA	HA.10.Sti.S-AU	HA.10.Sti.C-VA	HA.10.Sti.LC	HA.10.Sti.C	HA.10.Sti.S	
1-2	1-0	0-9	0-8	0-4	0-6	0-5	7-1	2-3	1-1	
ORDERING TEXT / BESTELLTEXT										
THIS DRAWING IS A CONTROLLED DOCUMENT. DIESE ZEICHNUNG IST EIN KONTROLLIERTES DOKUMENT.					DWN 08.02.2000 Schneider		D6 08.02.2000 Schweiger			
DIMENSIONS: MASSE/NHEITEN: mm					TOLERANCES UNLESS OTHERWISE SPECIFIED: ALLGEMEINTOLERANZEN		NAME			
MATERIAL					FINISH/OBERFLAECHE/FARBE		PRODUCT SPEC PRODUKTSPEZ. 108-74007			
							APPLICATION SPEC. VERARBEITUNGSSPEZ. 114-74009			
							SIZE CAGE CODE DRAWING NO ZEICHNUNGS-NR. A3 00779 C-1103414			
							RESTRICTED TO NUR FUER			
CUSTOMER DRAWING/KUNDENZEICHNUNG							SCALE MASSTAB 1:1	SHEET BLATT 1 von 1	REV D6	



Pin insert
Stifteinsatz HA.10.Sti